

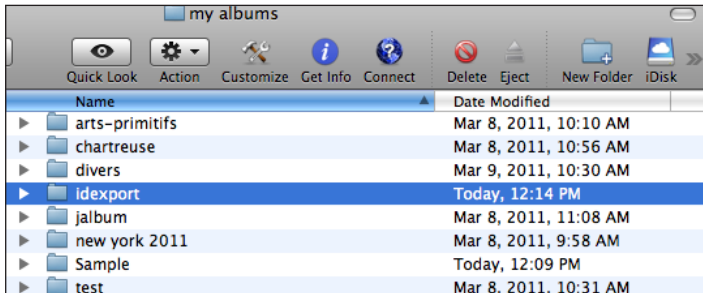
 Instant CatalogPublishing

# User Guide

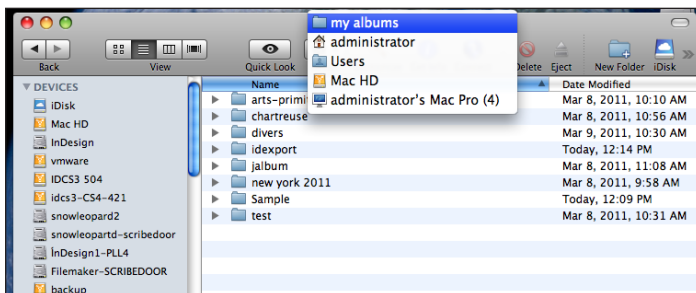
[www.indesign-catalog.com](http://www.indesign-catalog.com)

## Installation

- Unzip the ICP.zip archive
- Copy the folder Instant Catalog Publishing in Application folder
- Drag Instant Catalog publishing icon in your dock bar
- Copy the layout folder (InDesign templates) in the location of your choice.
- Copy the folder «idexport» in the folder containing your pictures.
- cf page 8 for script installation

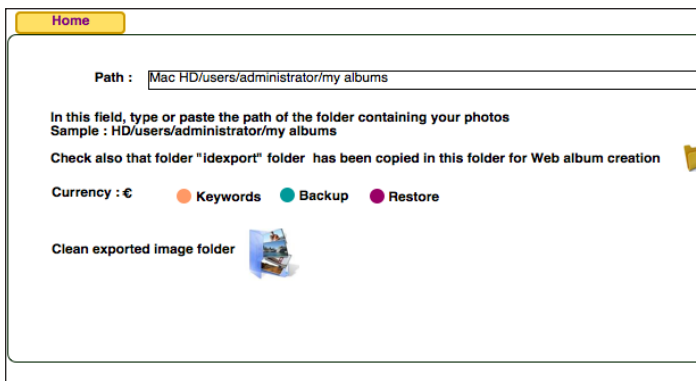


- Note the path of the folder containing your pictures



## First launching

- Double click on Instant Catalog Publishing
- Enter your serial number
- Paste the path of folder in the field “path”



- Click on “Home” to come to main menu

## ICP concept

This software is based on very simple and efficient concepts

- You can import as many images folders as you want in the database.
- It gives you the ability to sort these images according different keywords
- You can export your pictures with comments for Instant Catalog Publishing with InDesign.
- All the images imported are linked to their original folder. Removing images or folders will break the link
- Deleting records in database will not affect the images in original folder

## Albums import


- Click on “Import an album”

**Home**

**Folder name :**


**Date :**

**OK**





**Open your pictures folder**


- Type the name of the folder you want to import
- Click on the album folder icon  to display the content of your picture folder.
- Select the date you want to associate to this album.
- Click on ok



[Import an album](#) [Delete an album](#) [Import Excel file](#) [Export](#) [Preferences](#) [View layouts](#) 


**Albums :**

**Keywords :**

**Album N° 13** 12 photos in your album **June 2011**  

**Arts-primitifs**  **Info**



**1**  


  
**01.jpg**

Price :

Category :

**Keywords** ☐ Big\_forest ☐ New-york ☐ Very Big Seas



**2**  


  
**02.jpg**

Price :

Category :

**Keywords** ☐ Big\_forest ☐ New-york ☐ Very Big Seas

**3**  

  
**03.jpg**

Price :

Category :

**Keywords** ☐ Big\_forest ☐ New-york ☐ Very Big Seas

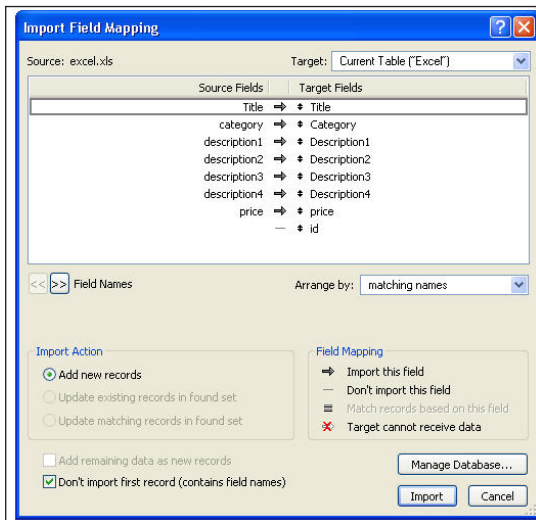
- the photos are imported and ready to be commented

## Import Excel file

You can also directly import an excel file.

You will find a file called excel.xls in the ICP folder, this file matches the import order and you can copy/paste your data in this file.

- Click on “Import excel file” and click on “select Excel file”
- You can import 7 fields corresponding to Title, category, description1, description2, description3, description4, price



- If fields are not matching, you can drag them with double arrow vertical icon in order to align excel fields with FileMaker fields



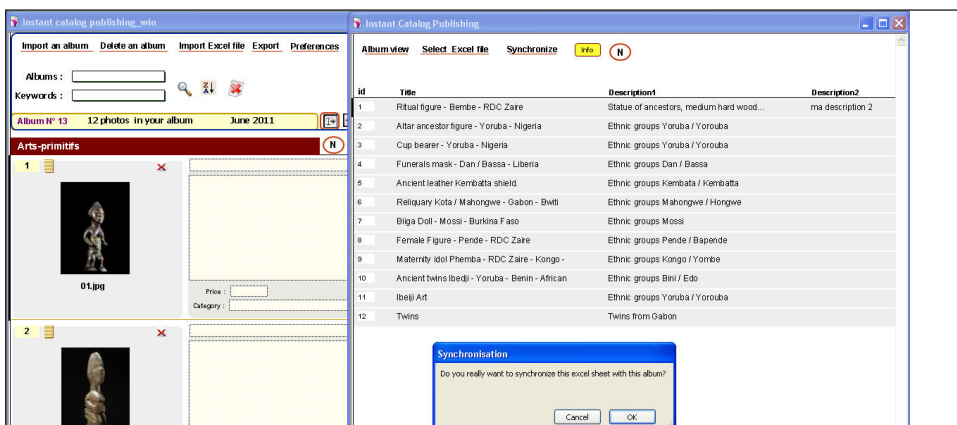
- Click on “don’t import first record (contain field names)” to skip first Excel title row



- Your excel file is now imported

Album view   Select Excel file   Synchronize   Info   N			
id	Title	Description1	Description2
1	Cup bearer - Yoruba - Nigeria	Ethnic groups Yoruba / Yoruba	
2	Funerals mask - Dan / Bassa - Liberia	Ethnic groups Dan / Bassa	
3	Ancient leather Kembatta shield	Ethnic groups Kembatta / Kembatta	
4	Reliquary Kota / Mahongwe - Gabon - Bwiti	Ethnic groups Mahongwe / Hongwe	
5	Biga Doll - Mossi - Burkina Faso	Ethnic groups Mossi	
6	Female Figure - Pende - RDC Zaïre	Ethnic groups Pende / Bapende	
7	Maternity idol Phemba - RDC Zaïre - Kongo -	Ethnic groups Kongo / Yombe	
8	Ancient twins Ibedi - Yoruba - Benin - African	Ethnic groups Bini / Edo	
9	Ibeji Art	Ethnic groups Yoruba / Yoruba	
10	Twins	Twins from Gabon	
11	Ritual figure - Bembe - RDC Zaïre	Statue of ancestors, medium hard wood...	
12	Altar ancestor figure - Yoruba - Nigeria	Ethnic groups Yoruba / Yoruba	

- You can arrange line order by typing new number in ID column. It is also possible to give a sequential order by clicking on N
- Click on “Synchronize” and click on ok in order to fill automatically the fields of selected album



## Deleting comments

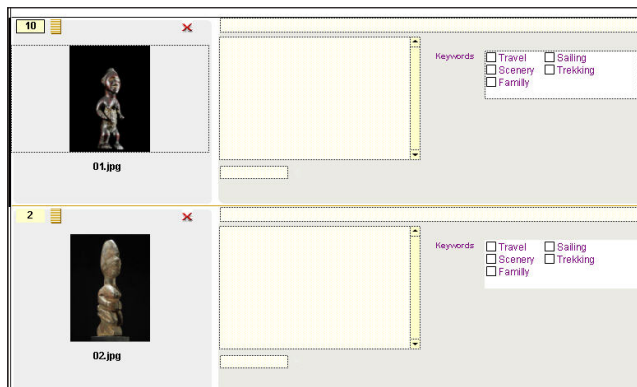
- You can delete all comments of selected album by clicking on the corresponding icon



:

## Reordering

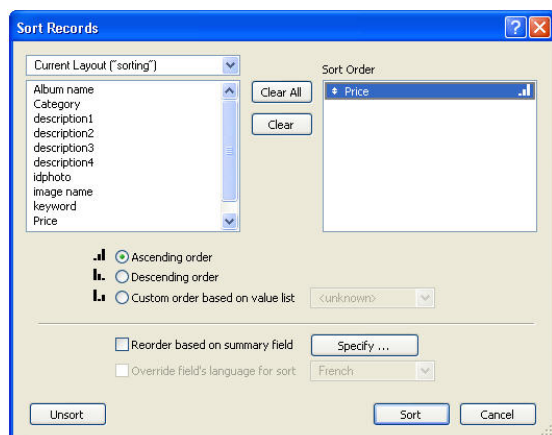
- you can reorder the photos by entering a new number in the corresponding field and pressing enter.



- If you change numbering, you can apply again sequential order by clicking on “N” button

## Sorting

- You can sort any album or keyword selection by clicking on the sort icon



- Select the field you want to sort, choose the sorting order and click on ok.

## Album selection

- To view the different albums you have imported, you can use corresponding pop-up menu.



This application supports complex script like Arabic or Hebrew, you can display RTL layout by clicking on this icon.



## Advanced search

- in List view, click on search icon



Advanced search

Title :

Category :

Description 1 :

Description 2 :

Description 3 :

Description 4 :

Album name :

Image name :

Keywords :

☐ big\_forest
☐ new-york
☐ very big seas

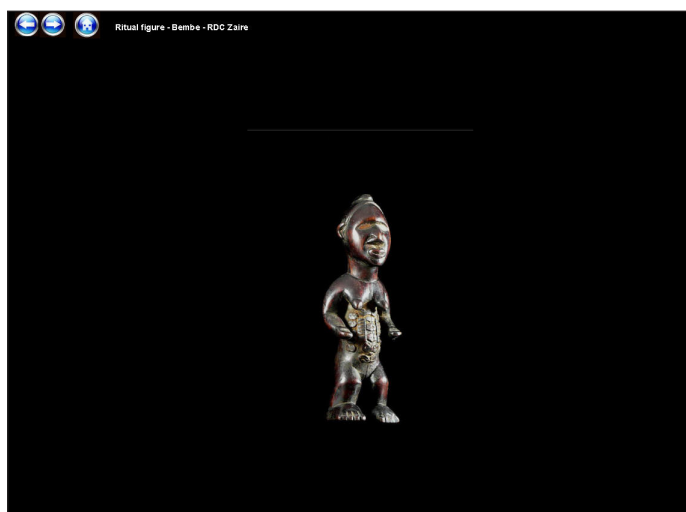
Price :

Hit enter key to perform search

- type your search criteria and press enter key to perform search

## Zoom view

- You can get a zoom view by clicking on a photo



## Add comments

- You can add comments to any photos : title, description, and price if necessary
- By clicking on the  icon, you can display larger view to type more information


Album N° 1

Date : March 2011

Ritual figure - Bembe - RDC Zaire

Description

Additional description ☐



...Statue of ancestors, medium hard wood

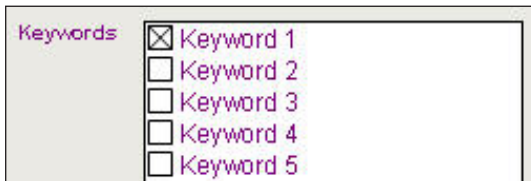
the opening on the back was used by the „nganga“ to give vital force to the figure, afterwards it was filled with magical material „bilongo“ (medicine) or relics of an ancestor (hair, pieces of finger nails or bones) as a symbol of the power and spirit of the deceased relative. Afterwards the opening was closed by a piece of fabric or a plug. As long as the spirit stayed within the statue, it watched over his descendants and punished contempt against customs and rules.

Belonging to the so-called „cryptopower figures“, a terminology introduced by William Fagg

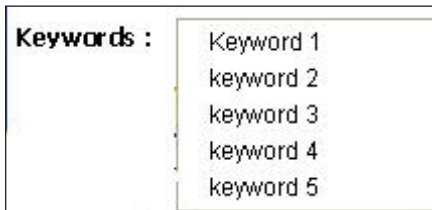
- You can also use additional description fields (For InDesign only) which will be included in datamerge. Mark corresponding check box to use this feature.

## Keywords

- You can assign one or several keywords to any photos



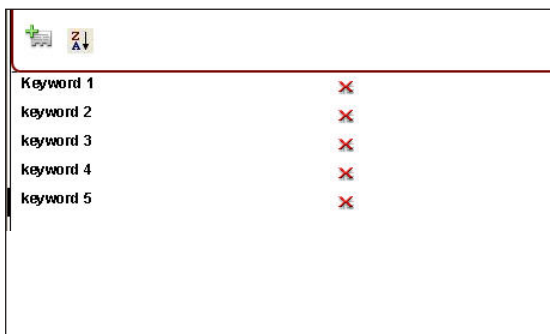
- To search all the photos corresponding to one keyword, you can use the corresponding pop-up



- To define new keywords or category , you have to go in Preferences panel and click on corresponding button



- you can add , delete new keywords or modify existing one



- You can then change image order by inserting a new number in corresponding field and pressing enter
- When displaying keyword selection, images have no numbering order. By clicking on **N** , images are numbered in their current order

## Export

The export function is very powerfull and enable to make a bridge with other applications like Jalbum, InDesign.

- Just click on the export button and it will open a folder containing the exported files (jalbum-settings.jap, albumfiles\_id.txt)

## InDesign, Flash and PDF files creation via datamerge

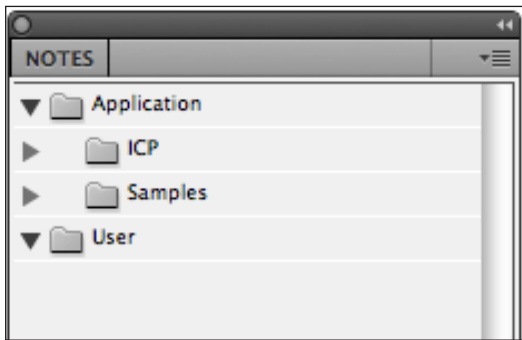
ICP includes a set of layout and scripts to publish instantaneously InDesign, Flash or PDF catalogs.

### Layout

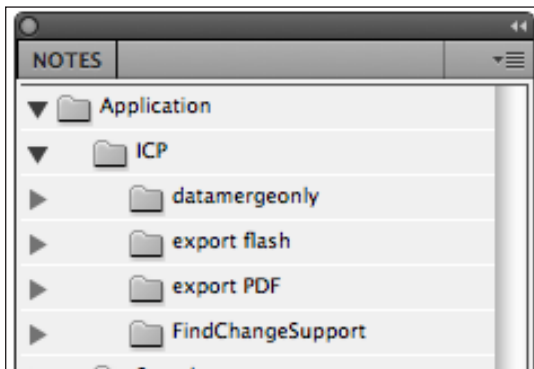
Copy the folder «Layouts» in the folder of your choice. This folder includes layouts single or multiple records layout. The folder «RTL layout» includes files for right to left scripts like Arabic or Hebrew.

### Script installation

- Open folder Script panel in Applications\Adobe InDesign CS5\Scripts\Scripts Panel
- Drag the ICP scripts folder into this folder and they will appear in the script panel in application folder.

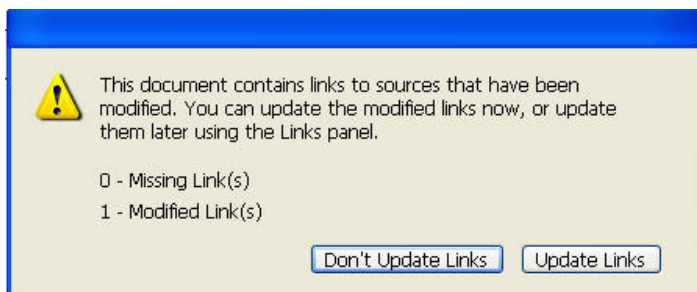


- It can be expanded to display the scripts



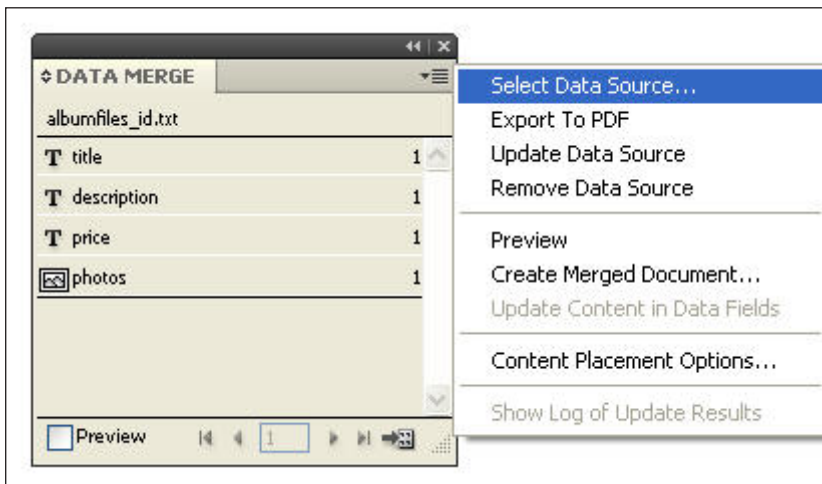
### Creation of a Flash or PDF catalog

- Open one of the template in the layout folder. It includes several InDesign templates with single (SR) or multiple records layout (MR)
- A warning message is displayed

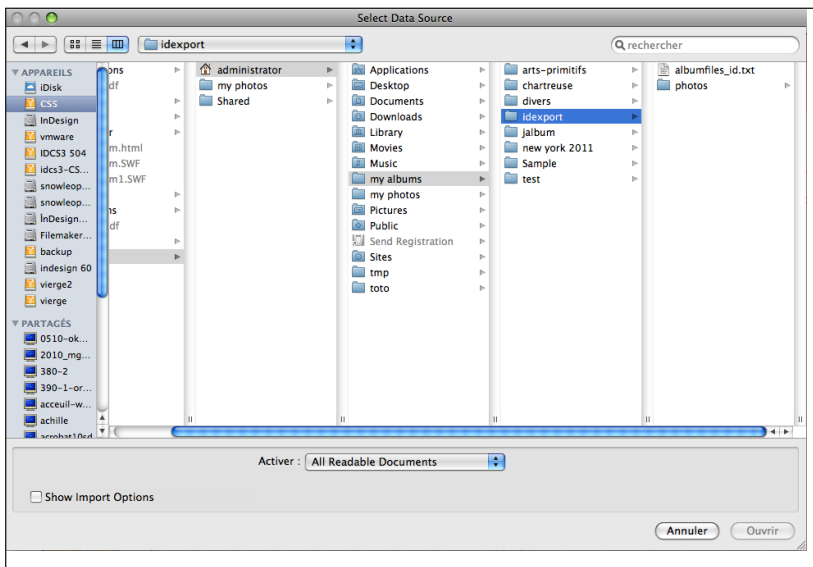


- Click on «don't update links»
- Display datamerge palette : Window>utilities>datamerge
- Select the command «Select data source» in contextual menu

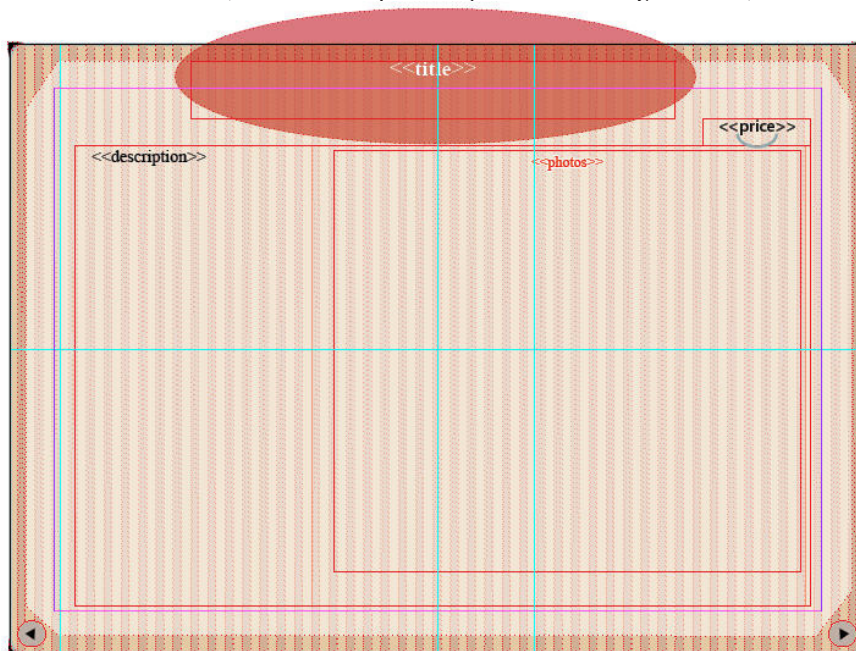




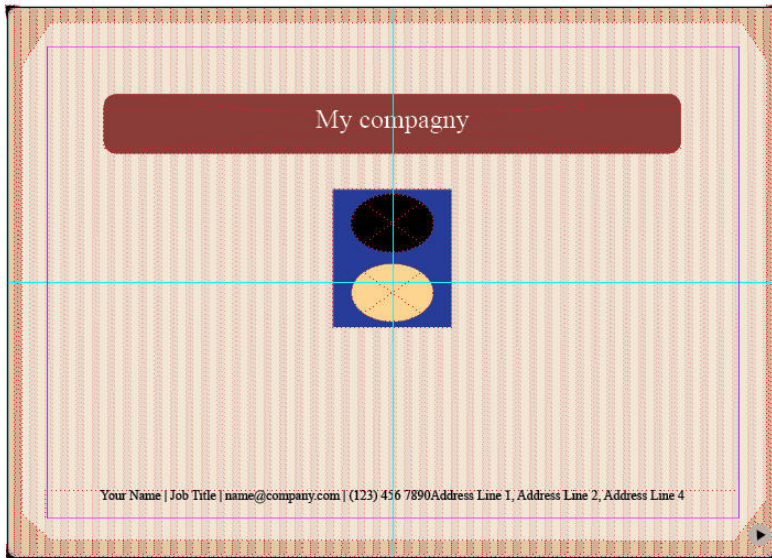
- Open the “idexport” folder in your pictures folder (path defined page 1) and select albumfiles\_id.txt



- Select albumfiles\_id.txt (it is the file exported by Instant Catalog database)



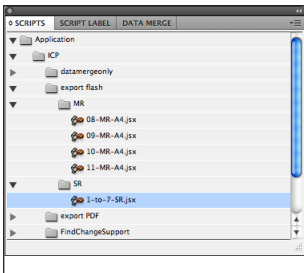
- You can also modify the master page
- Display the page palette and double click on 1-master



- You can add personal information, logo, picture, etc on this page.
- Save your document and it is ready now to be merged

## Catalog generation

- To generate the InDesign, Flash or PDF file, open the script palette, and double click on corresponding script



For single layout templates (SR), use 1-7-SR.jsx script  
 For multiple layout templates (MR), use script corresponding to layout names , for example, 08-MR-A4.jsx for 8-MR-A4.indd

- After a while, the InDesign, PDF or Flash file is generated at the root of your hard disk.

## Single records layout



## Multiple records layout

