

# On Premises Server Linux


## On-premises Output Time Installation

You can download the Installer Package zipped and update in Xampp Server installed folder ( ../xampp/www ). After installing Xampp Server , you can signed up for Output Time with the details and 60 Days Trail License key sent in the mail.

### Installing Xampp Server

#### Downloading Xampp Server

**Step 1:** Download the installer file for the latest version of Xampp Server <https://www.apachefriends.org/download.html> (<https://www.apachefriends.org/download.html>)



## XAMPP for Linux 5.5.19 & 5.6.3

Version		Checksum			Size
		md5	sha1		
5.5.19 / PHP 5.5.19	What's Included?	.....	.....	Download (32 bit)	123 Mb
		.....	.....	Download (64 bit)	126 Mb
5.6.3 / PHP 5.6.3	What's Included?	.....	.....	Download (32 bit)	122 Mb
		.....	.....	Download (64 bit)	122 Mb

[Requirements](#) [Add-ons](#) [More Downloads »](#)

Recommended

(<http://support.outputtime.com/wp-content/uploads/2015/03/step1.png>)  
Open terminal and download XAMPP 1.8.3 package.

for 32-bit:

```
wget http://sourceforge.net/projects/xampp/files/XAMPP%20Linux/1.8.3/xampp-linux-1.8.3-2-installer.run/download
```

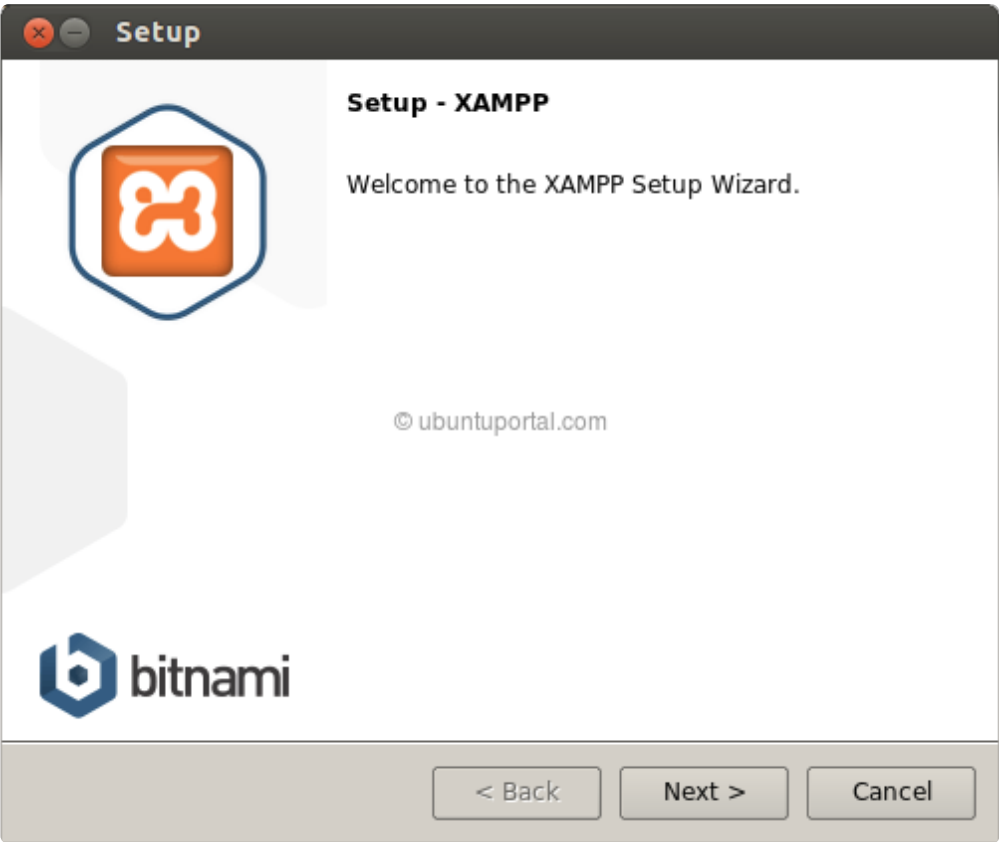
for 64-bit:

```
wget http://sourceforge.net/projects/xampp/files/XAMPP%20Linux/1.8.3/xampp-linux-x64-1.8.3-2-installer.run/download
```

**Step 2.** After that, Change xampp package installer to executable then run to installing with following command:

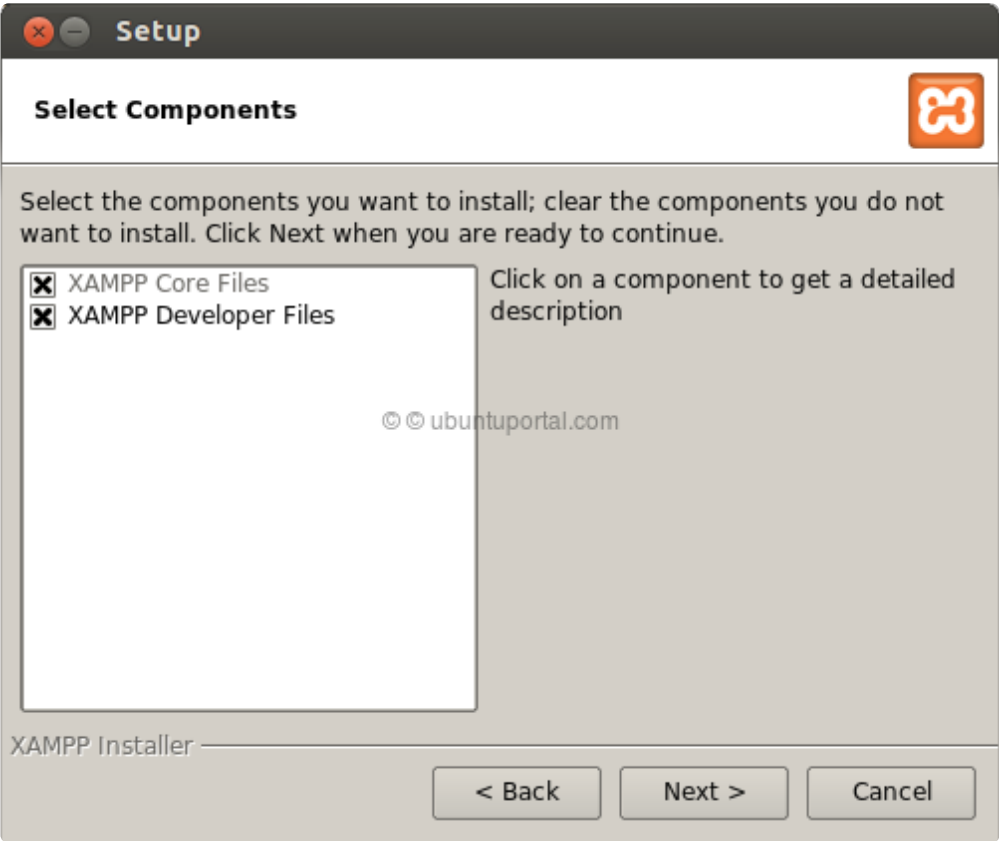
```
sudo chmod +x xampp-linux-x64-1.8.3-2-installer.run
sudo ./xampp-linux-x64-1.8.3-2-installer.run
```

The window installation wizard will appear and Click “Next”.



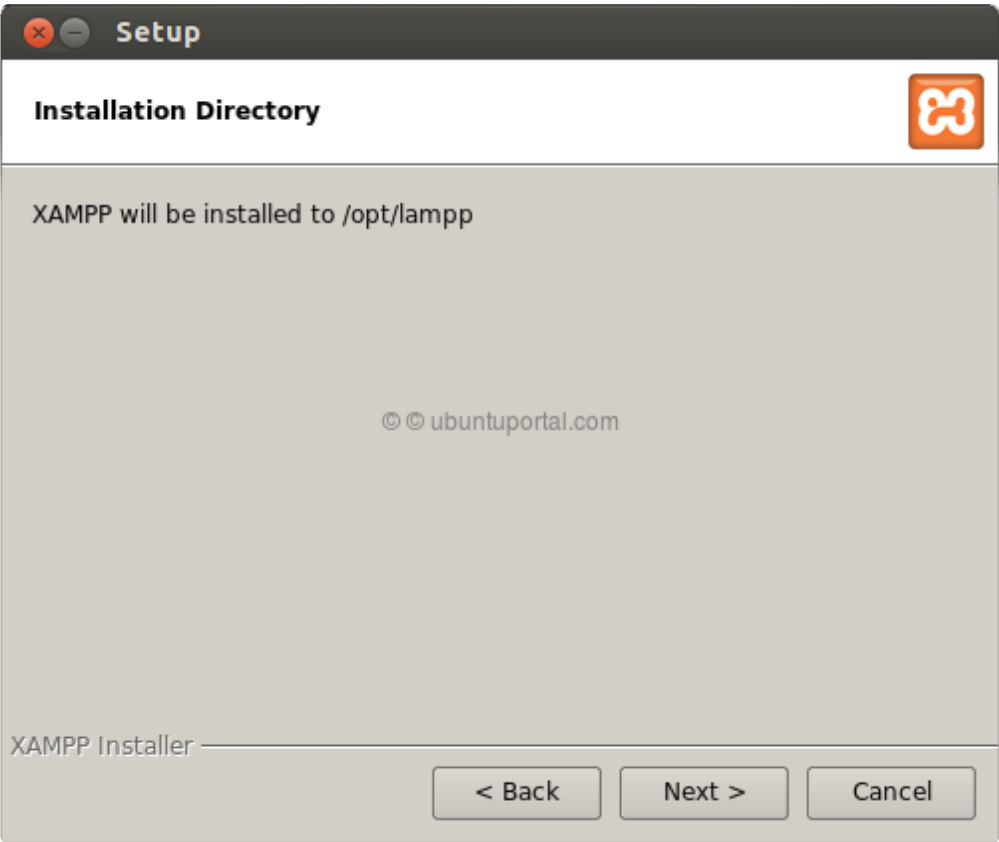
([http://support.outputtime.com/wp-content/uploads/2015/03/Setup\\_193.png](http://support.outputtime.com/wp-content/uploads/2015/03/Setup_193.png))

Select Components and Click “Next”.



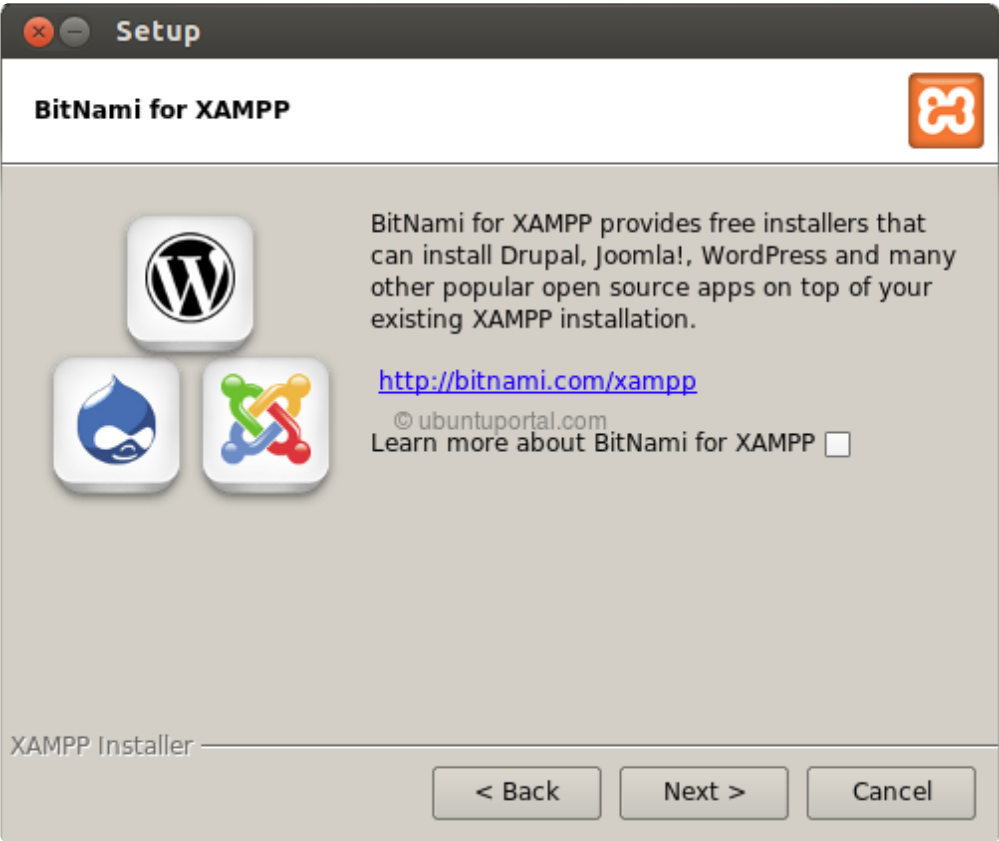
([http://support.outputtime.com/wp-content/uploads/2015/03/Setup\\_194.png](http://support.outputtime.com/wp-content/uploads/2015/03/Setup_194.png))

Xampp Installation directory is displayed



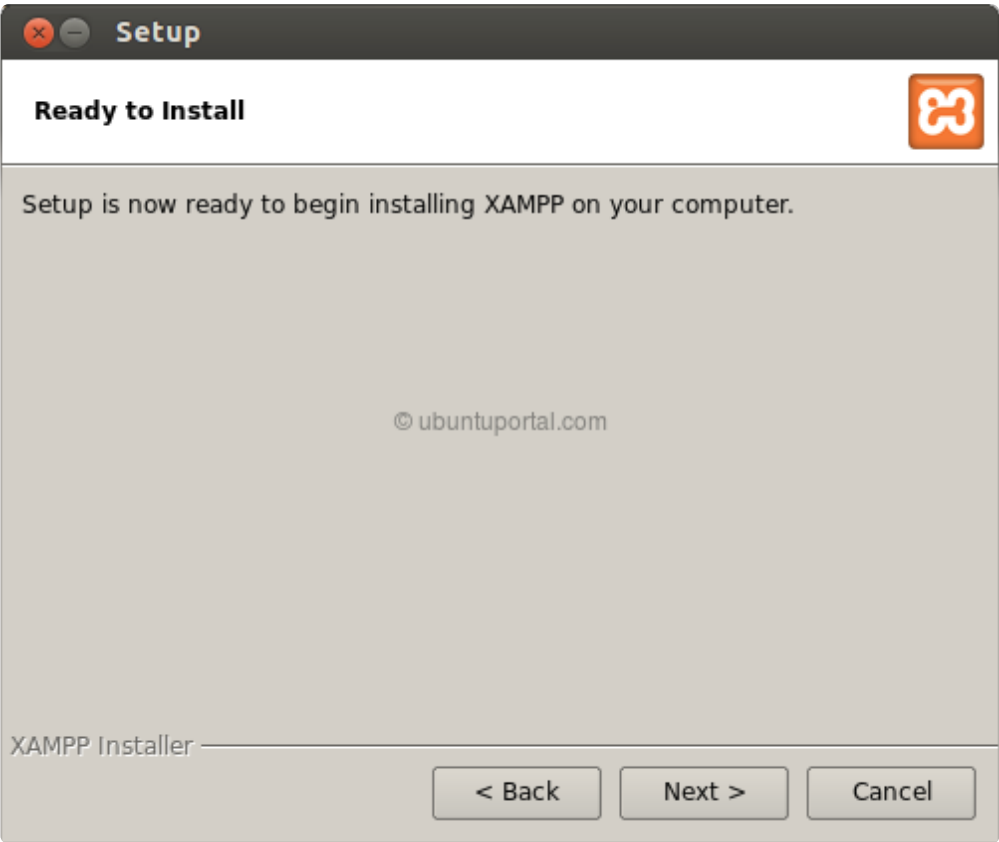
([http://support.outputtime.com/wp-content/uploads/2015/03/Setup\\_195.png](http://support.outputtime.com/wp-content/uploads/2015/03/Setup_195.png))

Uncheck “Learn more about BitNami for XAMPP” and click “Next”.



([http://support.outputtime.com/wp-content/uploads/2015/03/Setup\\_196.png](http://support.outputtime.com/wp-content/uploads/2015/03/Setup_196.png))

Setup now ready to Install and Click “Next”.



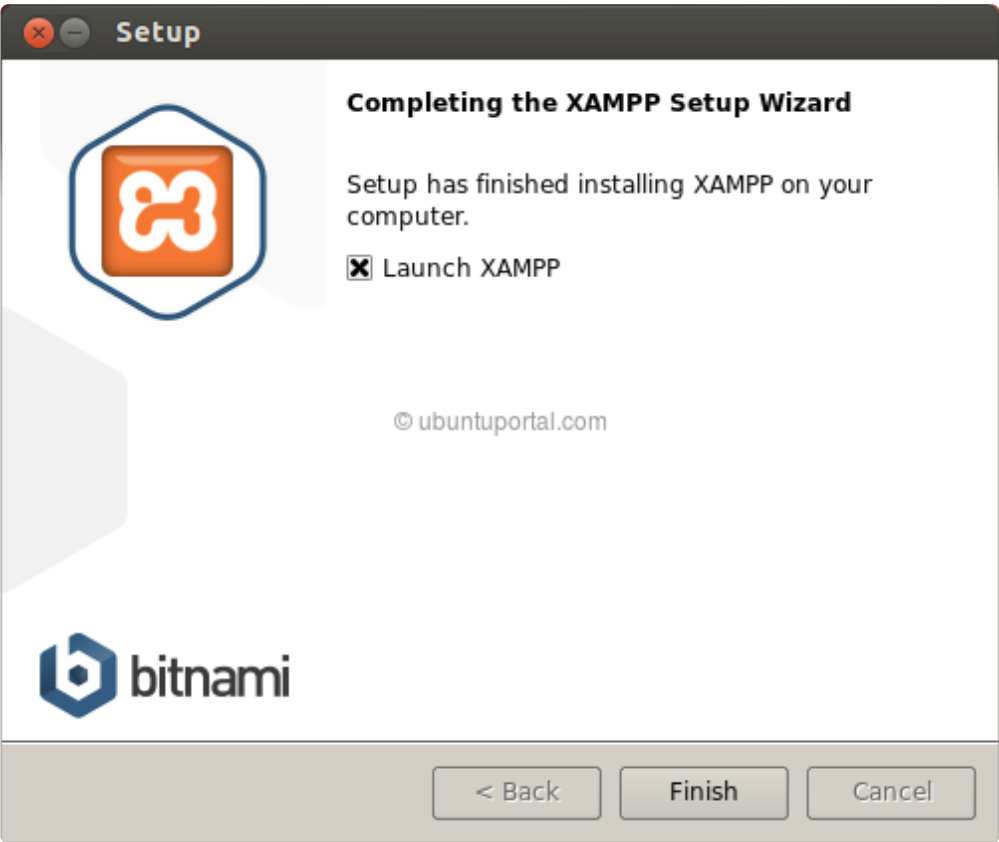
([http://support.outputtime.com/wp-content/uploads/2015/03/Setup\\_197.png](http://support.outputtime.com/wp-content/uploads/2015/03/Setup_197.png))

Unpacking the files and starts installation.



([http://support.outputtime.com/wp-content/uploads/2015/03/Setup\\_198.png](http://support.outputtime.com/wp-content/uploads/2015/03/Setup_198.png))

Completing the Xampp setup wizard.

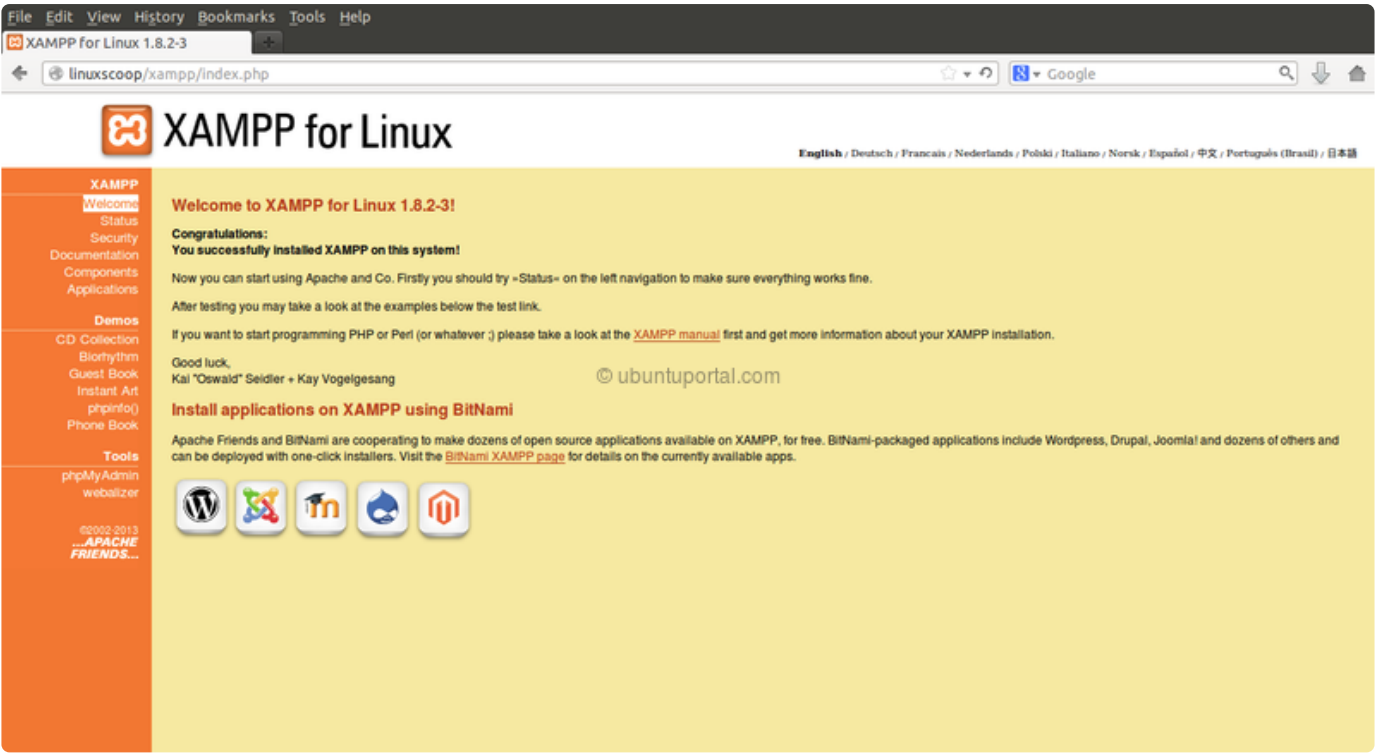


([http://support.outputtime.com/wp-content/uploads/2015/03/Setup\\_199.png](http://support.outputtime.com/wp-content/uploads/2015/03/Setup_199.png))

When you checked “launch XAMPP” before clicking finish a page will open in your browser, If the page does not open automatically, go into your browser’s address and type <http://localhost/xampp>.

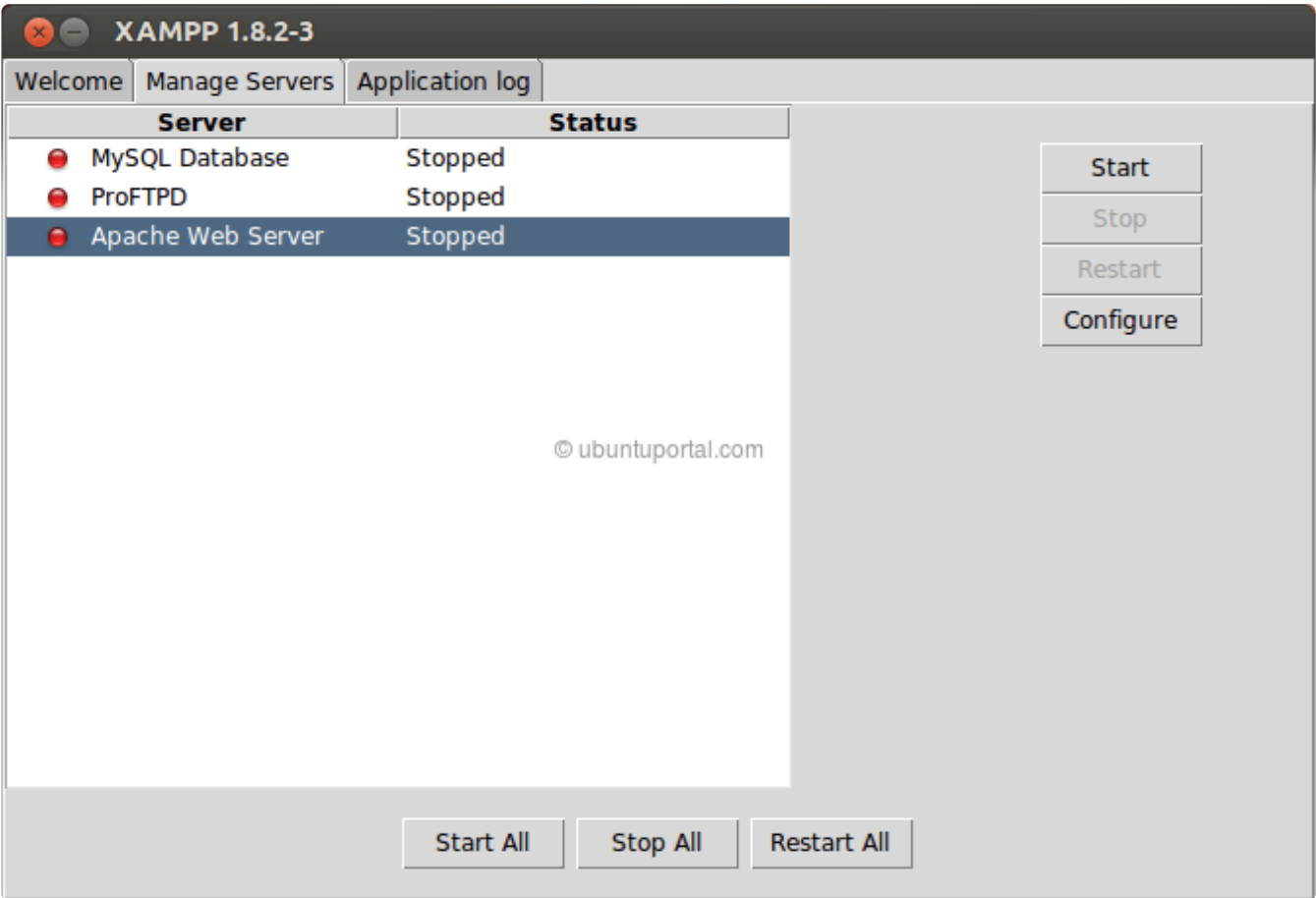
**To start the XAMPP service**

```
sudo /opt/lampp/lampp start
```



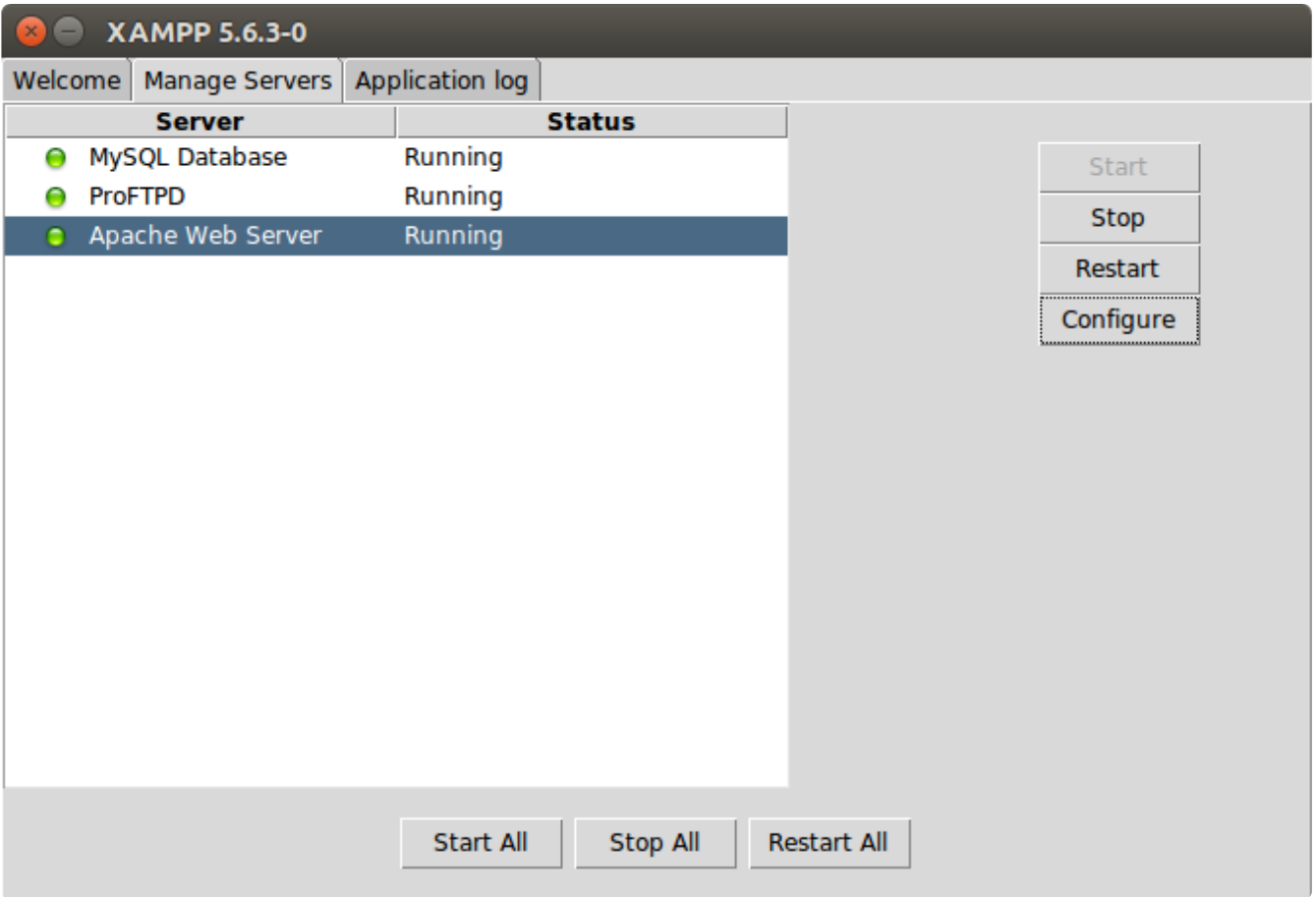
(<http://support.outputtime.com/wp-content/uploads/2015/03/XAMPP.png>)

Use the graphical interface of the program to start and stop the web server.



(<http://support.outputtime.com/wp-content/uploads/2015/03/XAMPP-1.png>)

Start all servers in Xampp and the screen look like



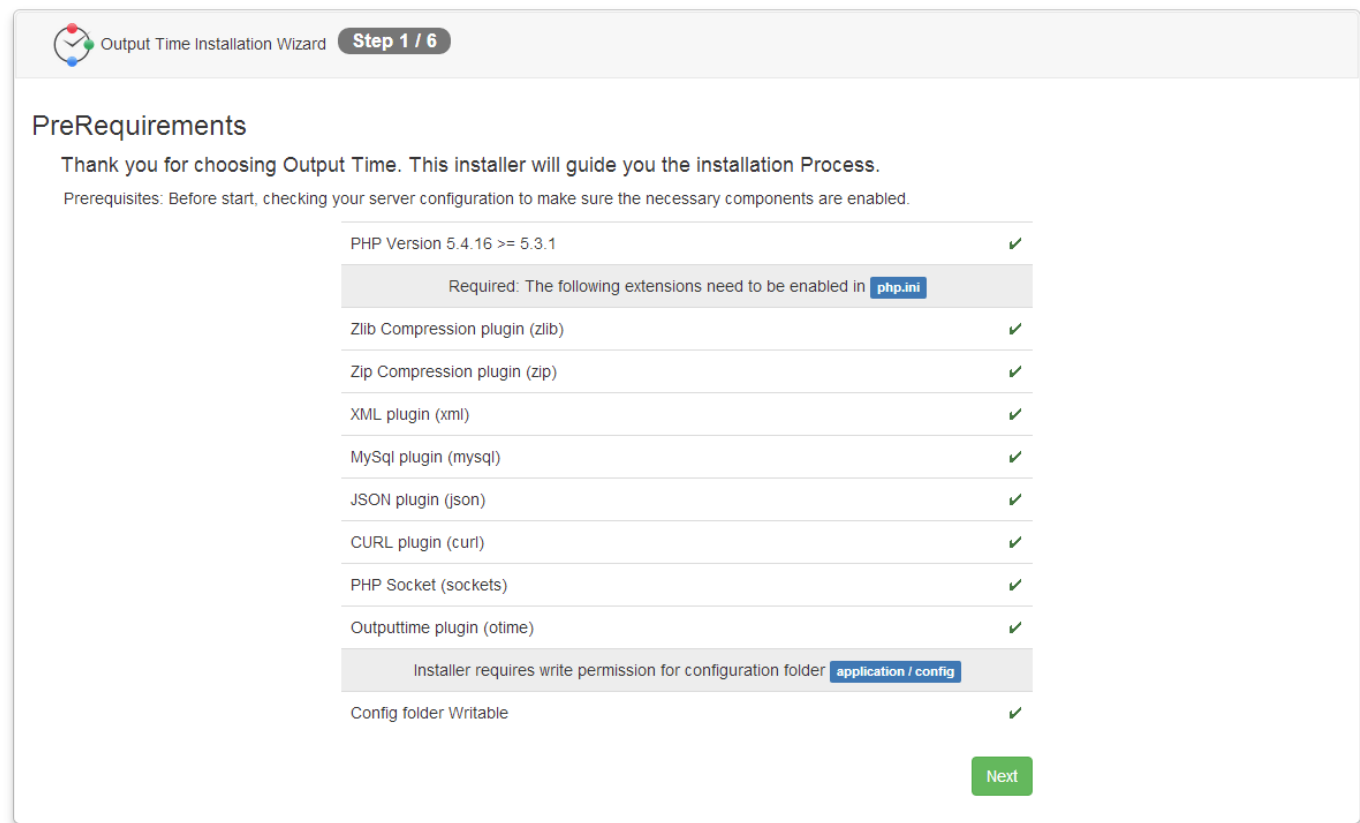
(<http://support.outputtime.com/wp-content/uploads/2015/03/SS10.png>)

### Installing Output Time

Extract the downloaded outputtime zip file and copy the outputtime folder. Then paste it in C:\xampp\www. (You can rename the outputtime folder to any other name). Now open a web browser and go to: <http://localhost/outputtime/>

### Pre-Requirements

Before installation , You should check your server configuration to make sure the below components are enabled.



(<http://kb.srimax.com/wp-content/uploads/2015/03/Output-Time-set-up1.png>)

- I ) Installer requires write permission for the configuration folder .
- II) PHP version should be 5.3.1 and above.
- III) You need to enable the PHP extensions in php.ini. Extensions are:

a) Zlib Compression Plugin

b) Zip Compression Plugin

c) XML Plugin

d) MySQL Plugin

e) Jason Plugin

f) Curl Plugin

g) PHP Socket

h) Output Time Plugin ( You can download the **otime.so** from the link in the installer )

You can copy the otime.so file in /opt/lampp/lib/php/extensions/no-debug-non-zt-xxxxxxx folder  
If the folder is not found, you can use this command to find the folder.  
/opt/lampp/bin/php-config --extension-dir  
Add this extension line in php.ini { extension=otime.so }

```
; tab-width: 4  
; End:
```

(<http://support.outputtime.com/wp-content/uploads/2015/03>  
`extension="otime.so"`

/sss.png)

After all plugin’s are enabled, you should restart Xampp to enable the settings.  
In Installer home screen all plugins enabled with “Yes” option and Next button is active to move next page of the installer.


Configure Notification Service

- Open the terminal & change directory to outputtime/application/third\_party/webhook/
- Then run this command to install notification service.  
sudo ./install\_service.sh
- If you want autostart when system restart. run this following line
- For **Centos/RedHat** based system.  
chkconfig -add /etc/init.d/ot-notification

- For **Ubuntu** based system.  
update-rc.d /etc/init.d/ot-notification defaults
- Configure Notification Service for Output Messenger (<http://www.outputmessenger.com/>) is optional.

Database Configuration

Choose the Data base driver and provide the Host name, User name , Password and Database name.

Output Time Installation Wizard

Step 2 / 6

Database Configurations

Create a Mysql Database for Output Time and provide the database connection information.

Database Driver

mysql

Host Name \*

localhost

User Name \*

root

Password

.....

Database Name \*

outputtime

Previous


Next

(<http://support.outputtime.com/wp-content/uploads/2015/03/Output-Time-set-up2.png>)

Login Details

Remember the Email and Password which is used to login for the first time as Administrator.  
With the Configuration details , you need to provide the License key which is sent in the mail During Registration .  
Copy the License Key from the Mail and update in the text box provided in the installer .  
Click on ‘Next’ and If the License key is valid it move to the next screen Finalizing installation.



Output Time Installation Wizard

Step 3 / 6

### Login Details

Please provide the information below to continue you Output Time installation.

Email \*

Email

Password \*

Password

Confirm Password \*

Confirm Password

First Name \*

First Name

Last Name

Last Name

License Key \*

License Key

Get license here : <http://www.outputtime.com/index.php/on-premises-register/>


Previous

Next

(<http://support.outputtime.com/wp-content/uploads/2015/03/Output-Time-set-up3.png>)

SMTP Details

To configure multiple outbound email settings, you can provide your SMTP details or you can skip this step. Provide your fully qualified domain name or your SMTP server IP address and your listening Port number. Provide the login credentials(SMTP User Name and Password) in order to connect to the SMTP server and send the emails. Click Next.

Output Time Installation Wizard

Step 4 / 6

Please provide the SMTP details below to send emails via this.

SMTP Host Name

ssl://smtpout.secureserver.net

SMTP Port

465

SMTP User Name

noreply@outputtime.com

SMTP Password

\*\*\*\*\*

Previous


Skip

Next

(<http://support.outputtime.com/wp-content/uploads/2015/03/Output-Time-set-up4.png>)

Finalizing Installation

Verify the details provided for installation and if you want to modify click on Previous. If all details are verified , click on Install to start installation.

Output Time Installation Wizard

Step 5 / 6

Finalising Installation

Database Settings		User Details	
Database Driver	mysql	Email	john@gmail.com
Host Name	localhost	Password	*****
User Name	root	First Name	John
Password		Last Name	doe
Database Name	outputtime	License Details	
SMTP Settings		License Key	0c8gdwqvxD3mw2K1qeiq6V8fwCBmFiXmrGir7KAe1Z/hoyKr+DV6e+7tp+z
SMTP Host Name	ssl://smtpout.secureserver.net	Company Name	Kidsworld
SMTP Port	465	Expiry Date	2015-09-25 06:19:46
SMTP User Name	noreply@outputtime.com	Max Users	0
SMTP Password	*****		
<a href="#">Previous</a>		<a href="#">Install</a>	

(http://support.outputtime.com/wp-content/uploads/2015/03/Output-Time-set-up5.png)

Complete Installation

When installation completed Successfully , Congratulations screen will displayed.

Output Time Installation Wizard - Installed

### Congratulations

Your Output Time installation has been completed successfully.

Please make sure to change permission of configuration folder `application/config` to remove write access.

Please rename / remove the `installer.php` file in root directory (or) [Click here to continue](#).

Let's increase our output time!!

(http://support.outputtime.com/wp-content/uploads/2015/03/Output-Time-set-up6.png)

In the success screen, you have a link 'Click here to continue' to go to the Login screen with the domain URL you configured in the Database.





John



☐ Remember Password

Login

[Forgot Password?](#)

[Register](#)

(<http://support.outputtime.com/wp-content/uploads/2015/03/Output-Time-set-up7.png>)

Login and Get started to manage your time better

