



## Quick Start Guide

Relevos 6.1 is a minor upgrade from 6.0. We created this guide to help you minimize the learning curve and configure the basic functions of the Relevos.

### Add a Group

From the GROUPS tab, choose Create a Group. Or, right-click on the tree-view and choose Add a Group

### Add a Computer

From the COMPUTERS tab, choose Add Computers, or right-click on the tree-view.

### Get the Status

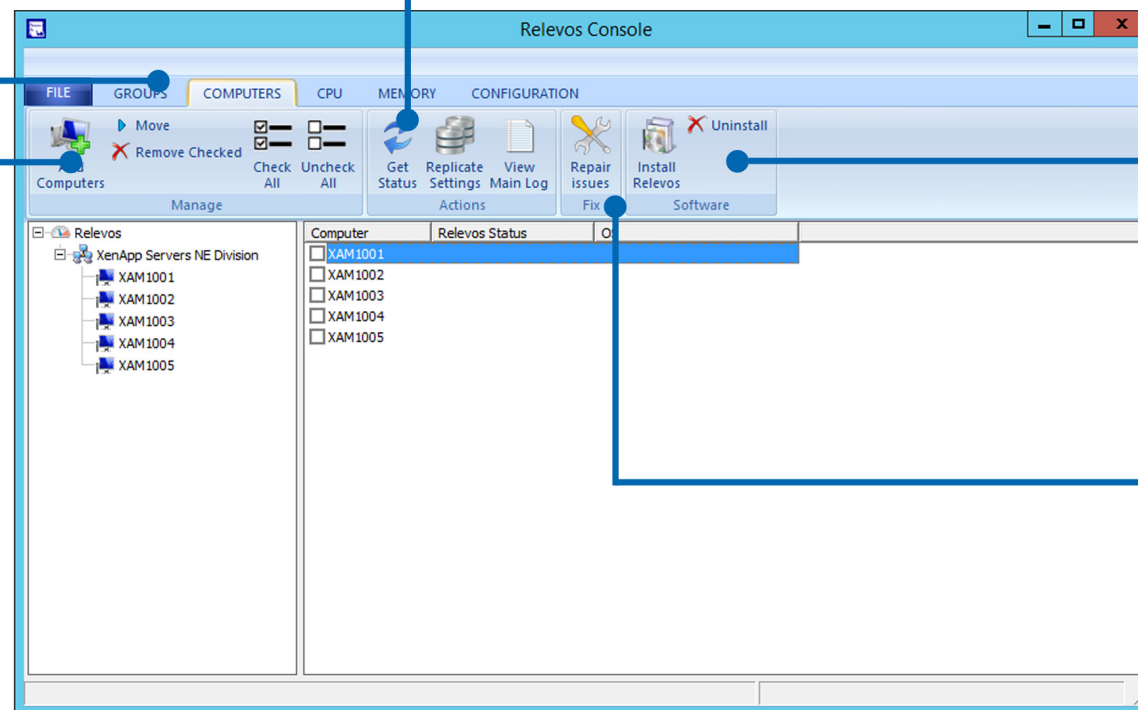
To check if the computers are ready to run Relevos, press this button. A status will show, with any errors if applicable.

### Install Remotely

Check the target servers and choose this option to install the Relevos Client to them.

### Repair Issues

If any computers have an issue, Relevos will attempt to fix them. Some issues cannot be fixed by the Relevos Console (i.e. a firewall)





## Configure CPU Throttling

CPU Throttling is one of the main features of Relevos. It enables more capacity on the server and eliminates excessive process CPU utilization with no user slowdowns.

### First, click the CPU tab

The CPU tab contains all of the functions related to controlling CPU utilization. After clicking on the CPU tab, click on the Throttling icon.

### Next, select/check servers

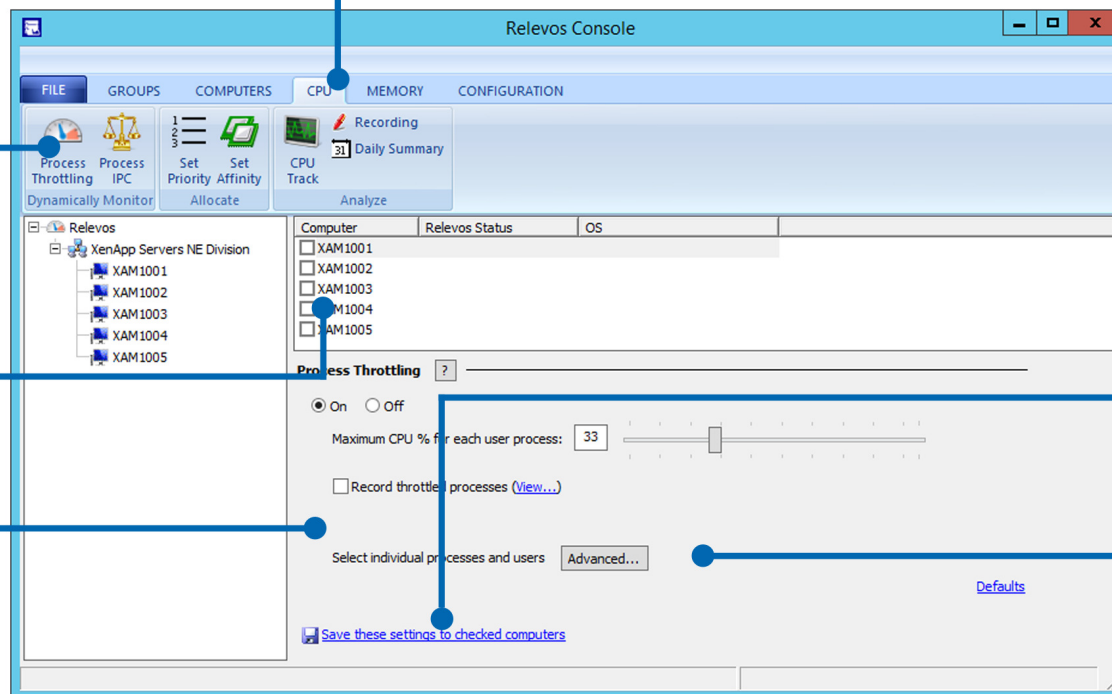
Put checkmarks in front of servers that will receive the settings below. Highlight a server if you want to use its settings as a starting point.

### Then, turn on Throttling

Turn on the Throttling setting, and adjust the maximum CPU% for each user process. A good starting point is 33%.

### Finally, save settings

Click here to save the settings to only the checked servers. This same process is used throughout Relevos for sending settings for the chosen option. For full Replication, choose it from the Computers tab.



### Advanced

You can choose specific processes or users here.



## Configure Memory Optimizing

Memory Optimizing enables more programs to run within the memory limits of the server. Allocated-but-unused memory is freed but still made available to the program consuming the excessive memory.

### First, click the Memory tab

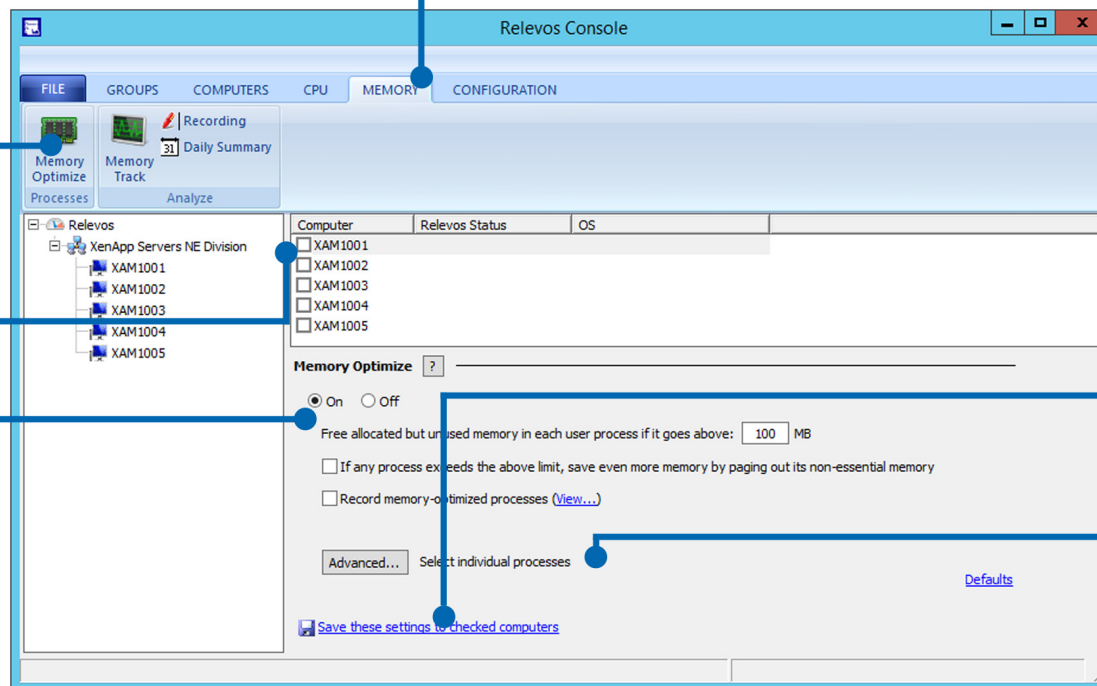
The Memory tab contains all of the functions related to controlling process memory. After clicking on it, click on the Memory Optimize icon.

### Next, select/check servers

Put checkmarks in front of servers that will receive the settings below. Highlight a server if you want to use its settings as a starting point.

### Then, turn on Memory Optimize

Turn on the Memory setting, and adjust the minimum memory limit used for each user process.



### Finally, save settings

Click here to save the settings to only the checked servers. This same process is used throughout Relevos for sending settings for the chosen option. For full Replication, choose it from the Computers tab.

### Advanced

You can choose specific processes or users here.



## Configure Memory Tracking

Memory Tracking gives administrators a dynamic notification and resolution to user processes that consume excessive memory.

### First, click the Memory tab

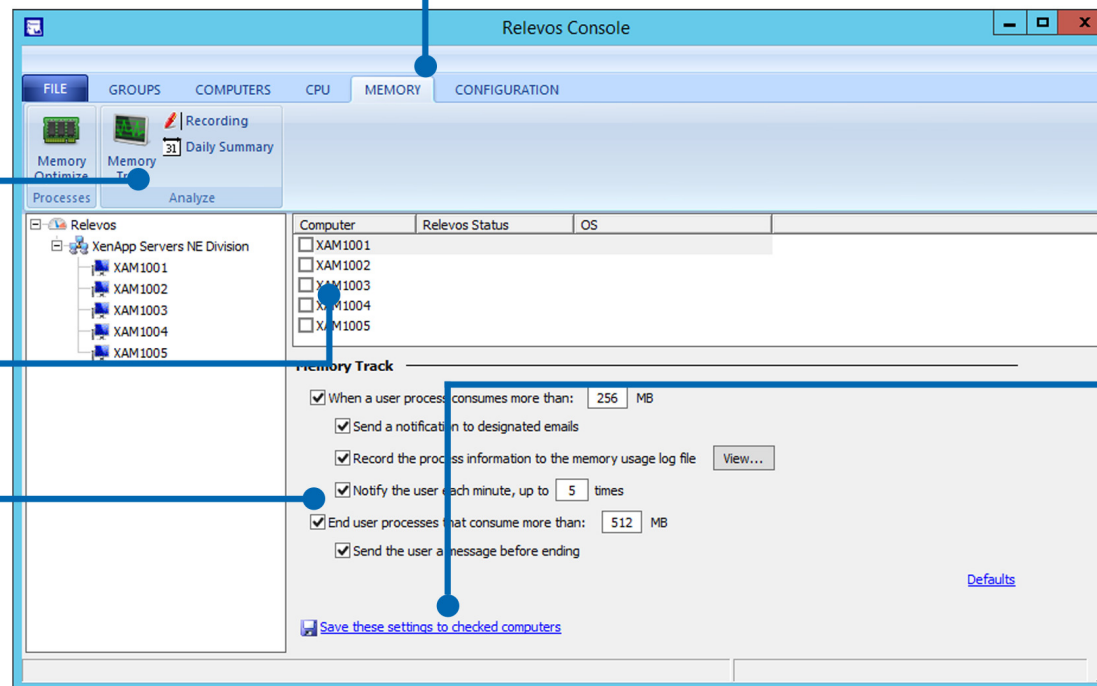
The Memory tab contains all of the functions related to controlling process memory. After clicking on it, click on the Track icon.

### Next, select/check servers

Put checkmarks in front of servers that will receive the settings below. Highlight a server if you want to use its settings as a starting point.

### Then, turn on Memory Track

Check the main checkbox to turn on Memory Tracking. A good starting value is 256MB.



### Finally, save settings

Click here to save the settings to only the checked servers. This same process is used throughout Relevos for sending settings for the chosen option. For full Replication, choose it from the Computers tab.



## Configure Email Notifications

Relevos can send notifications to designated emails for the events it tracks.

### First, click the Configuration tab

The Configuration tab contains settings that aren't CPU or Memory-related. For this Quick Start setup, click on the Email icon.

### Next, select/check servers

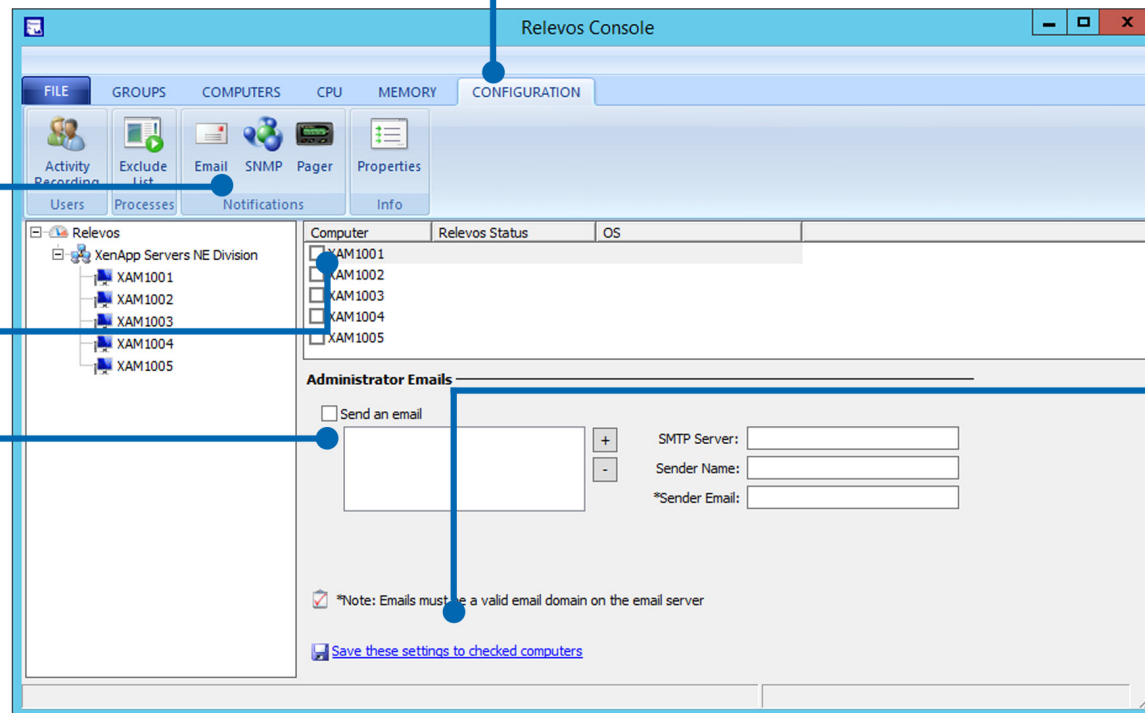
Put checkmarks in front of servers that will receive the settings below. Highlight a server if you want to use its settings as a starting point.

### Then, turn on Email Notification

Check the main checkbox to turn on Email Notification, then fill in the fields as appropriate.

### Finally, save settings

Click here to save the settings to only the checked servers. This same process is used throughout Relevos for sending settings for the chosen option. For full Replication, choose it from the Computers tab.





## About

Relevos controls runaway processes and heavily loaded servers and prevents any process from slowing a server down. Relevos is true CPU Throttling software for Remote Desktop Servers running Citrix XenApp or other 3rd party software. Relevos uses WM Software's patented technology, ensuring no process impacts other users. Benefits are seen immediately after installation, and it can be fine-tuned to single-out certain processes or users. A central management console controls settings for all Relevos clients. Relevos is completely different from XenApp's CPU Utilization and Optimization services, and as such, Relevos runs with them. Add value to your servers by spending less time fighting fires and more time designing and supporting solutions for your company.

Take full advantage of your company's infrastructure investment by ensuring no process goes out of control. Relevos is a key software component in your overall SBC/VDI environment.

### Requirements

Relevos requires Remote Desktop Services / Terminal Services.  
Relevos runs on Windows Server 2003, 2008, 2008 R2, 2012, and 2012 R2.  
It is Citrix Ready for XenApp 5.0 through 7.5, and is Citrix Ready for XenServer.  
It is VMware Ready for ESXi 5.0 and above.  
Relevos uses 35MB RAM and 20MB of disk space.

## Helpful links

### Product Information

[www.wmsoftware.com/relevos](http://www.wmsoftware.com/relevos)

### Support

[www.wmsoftware.com/support](http://www.wmsoftware.com/support)  
[support@wmsoftware.com](mailto:support@wmsoftware.com)  
+1 330.558.0501

## How to buy

### Purchase Direct:

[www.wmsoftware.com/relevos/buynow](http://www.wmsoftware.com/relevos/buynow)  
[sales@wmsoftware.com](mailto:sales@wmsoftware.com)  
+1 330.558.0501

### Purchase through a WM Software Reseller

[www.wmsoftware.com/reseller](http://www.wmsoftware.com/reseller)