

## Stop P-O-R-N

### New Stealth/Hidden Version Installation Option

#### How to use STOP P-O-R-N

Upon installation, STOP P-O-R-N will automatically start and ask you for a password. It is important that you do not lose this password. As a precautionary measure, there are no default passwords that will unlock Stop P-O-R-N. If there was, it would make it easy to hack into the program. DONOT LOSE YOUR PASSWORD. IT IS UNRECOVERABLE.

An icon of a blue shield will be displayed in your icon tray located at the bottom right hand side of your screen. The functions of STOP PORN can be accessed only from this icon.

Left Double-Click to shut down STOP P-O-R-N . STOP P-O-R-N will ask you for your password before it will shutdown.

Right Click to access Configure Options for STOP PORN or double click on the configure options icon located on your desktop or program files menu. The Configuration Options screen is where most of the control for Stop P-O-R-N resides. Again the options screen can not be accessed without your password created by you.

#### Stop File Sharing Applications from Running

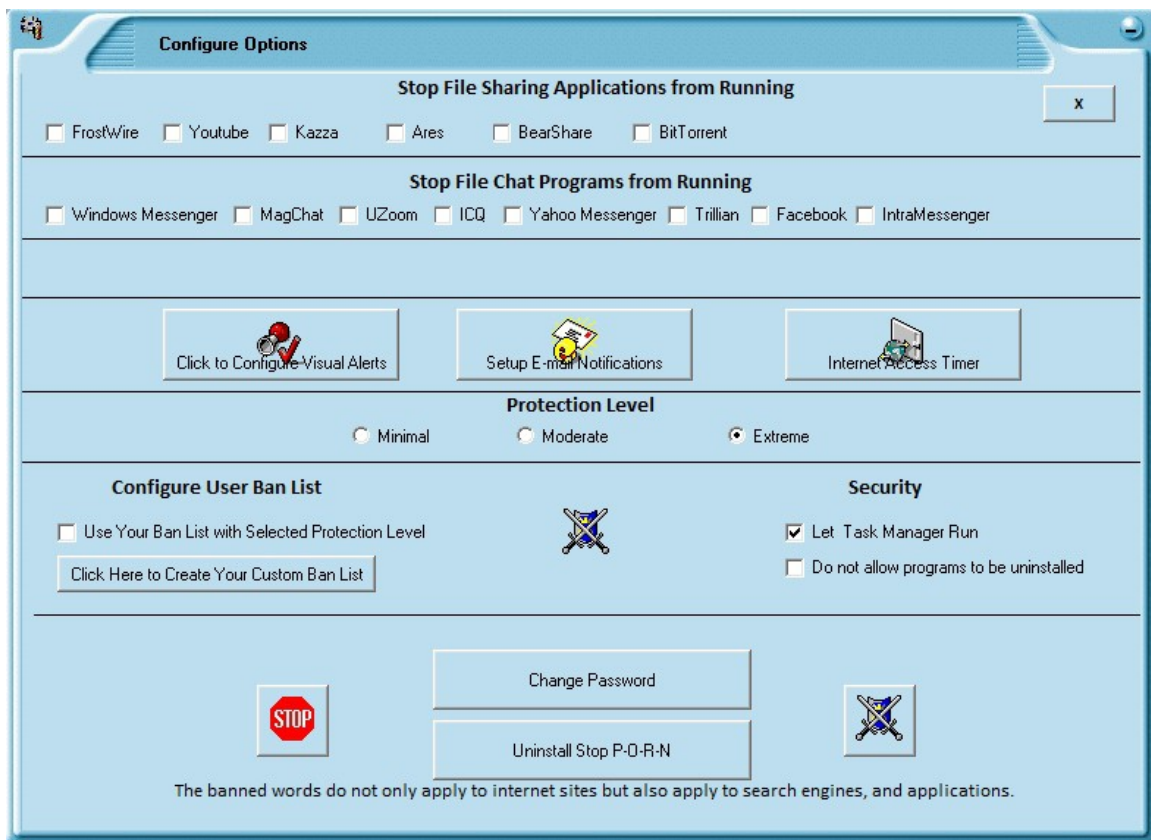
We suggest that you check one or more of these when you do not want your child to use these applications. Many of our users have asked to give them an option to not allow the use of YouTube due to their child's misuse. If there are other applications or web sites that you would like to be disallowed, then more can be entered when you create your own custom ban list.

#### Stealth-Hidden Installation of Stop P-O-R-N

Upon installation, the installer will ask you if you would like Stop P-O-R-N installed in stealth mode or just regular mode. The stealth mode will not install any shortcuts on the PC. All functions of Stop P-O-R-N can only be accessed by right mouse clicking on the blue shield located on the right lower corner of the icon tray.

The regular type of installation provides multiple means of access the configuration screen. It is a very visual type of installations, typical of many applications in the industry.

## Stop P-O-R-N

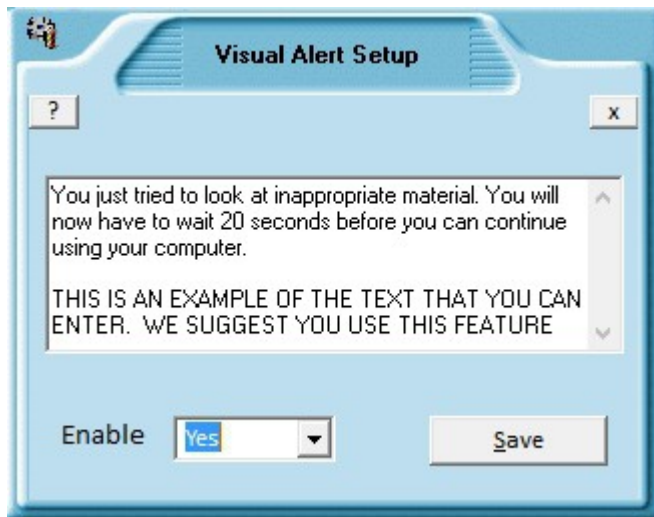


### Stop File Chat Applications From Running

This is much the same as the stop filing sharing menu except it pertains to chat applications. The chat applications displayed on the configuration screen are ones that are the most requested to block by our users. Again, if there are ones that you would like to block which are not displayed, please enter them in your custom ban list.

### Click to Configure Visual Alerts Button

## Stop P-O-R-N



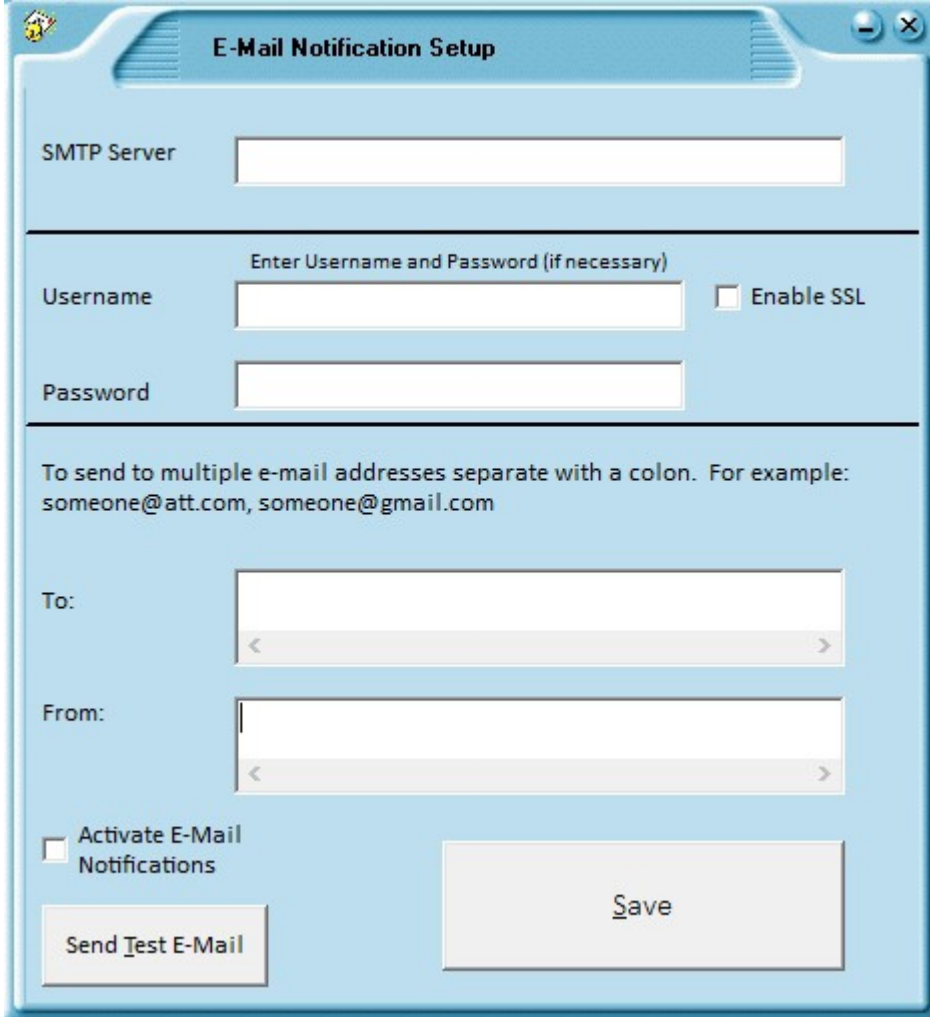
The Visual Alert that Stop P-O-R-N will give to the user is a full screen display with the text you entered in the setup. We provided you a sample text sentence. It can be anything you want. A user said they were having fun with it and entered the text "Your mama is watching you!"

The alert screen will launch if you enable it. The alert screen will display your flashing text full screen. The user will have to wait for 20 seconds before normal use can begin.

The visual alert will be triggered by an inappropriate word being used or any banned word or application.

## Stop P-O-R-N

**Click to Setup E-Mail Notifications Button**



The image shows a Windows-style dialog box titled "E-Mail Notification Setup". It has a blue header bar with a small icon on the left and standard window controls (minimize, maximize, close) on the right. The main area is white with blue borders. It contains several input fields and checkboxes. At the bottom, there are two buttons: "Send Test E-Mail" and "Save".

SMTP Server

---

Enter Username and Password (if necessary)

Username  ☐ Enable SSL

Password

---

To send to multiple e-mail addresses separate with a colon. For example:  
someone@att.com, someone@gmail.com

To:

From:

☐ Activate E-Mail Notifications

E-mail notifications to the parent concerning the use of the computer Stop P-O-R-N is installed can be setup using this screen. Because there are so many different e-mail providers and settings, we have decided to design our e-mail notifications around Gmail.

Once you fill in all of the necessary fields, make sure you checkmark the "Activate E-mail Notifications" To ensure the e-mail notifications work, you

## Stop P-O-R-N

may send a test e-mail to yourself.

Always enter the server name. It usually begins with "smtp"

The e-mail alert will be sent to the e-mail addresses you have specified.

The body of the e-mail will tell you what word was searched by the user of the computer and also tell you what computer name it was. This comes in handy when you have multiple people using Stop P-O-R-N in the family. It is a must to know what computer is being used and the time the inappropriate word was searched.

### **Protection Level**

There are three protection levels that may be used. We suggest that "extreme" be used to provide the maximum protection. Extreme is the default setting. There are some advanced users who would like to create a more custom ban list so checking "minimum" and creating the custom list makes better sense for them. The "moderate" protection provides adequate pornographic blocking. Every individual has their own opinion as to what is suitable viewing and what is not. The best way to find out what protection level suites you is to try Stop P-O-R-N on these three levels and make your decision. When in doubt, select "Extreme" and make very few custom ban words. The "Extreme" setting is by far the best for children.

### **Configure User Ban List**

## Stop P-O-R-N

**STOP P-O-R-N**

**Create Your Custom Ban List**

*To ban a website that is called [www.banme.com](http://www.banme.com) only include the name [banme](http://banme.com) in the list. Never include [www](http://www.com) or [.com](http://.com) or [.org](http://.org), etc. Only use the words between [www](http://www.com) and [.com](http://.com). The banned words do not only apply to internet sites but also apply to search engines, and applications. If banning the application Limewire is desired, add the word [limewire](http://limewire.com) to the ban list. The word [limewire](http://limewire.com) will also not be allowed as a search word on Google, Yahoo, or any other search engine.*

[Add](#) [Clear Entry](#)

**porn**

[Delete](#)

[Word Count](#) 1

[Suggest Key Words](#) [Save](#)

The User Ban List is a very powerful tool. It must be used with caution. You can stop applications and web pages from being viewed. With power there must be caution. Just remember when you enter a word to be banned, this will pertain to the web and to applications themselves.

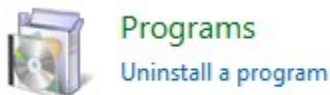
If you find a key word that you think we should incorporate into our next release, just press the button "Suggest Key Words" and we will review and make the determination to include it. Your input is important to us!

## Stop P-O-R-N

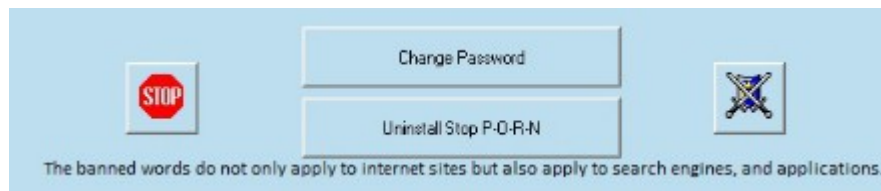
### Security



The security features that are incorporated into Stop P-O-R-N are numerous but can be enhanced by not letting Task Manager and not letting programs to be removed by the person using the computer. The reasons are these: (1) by disabling the Task Manager, it will not allow the user to terminate Stop P-O-R-N using Task Manager. When Task Manager is disabled, no program can be terminated by the user.



(2) In order to prohibit Stop P-O-R-N from being installed or any other program without your permission, then check “do not allow programs to be uninstalled.” We suggest that both of these be enabled so that your computer is more locked down. Just to note: Stop P-O-R-N requires a password to uninstall it. Having this feature is not necessary to deter the un-installation of Stop P-O-R-N.



The next few features are self-explanatory but wanted to ensure that we touch on these. The “Stop” button will terminate all Stop P-O-R-N processes. The “blue shield” will start all Stop P-O-R-N processes. The “Change Password” allows you to change your original password. The “Uninstall Stop P-O-R-N” will allow you to do a complete uninstall of

## Stop P-O-R-N

Stop P-O-R-N components.

### Internet Access Timer



The Internet Access Timer only controls internet access and nothing more. The timer can be set to a certain interval in minutes to disable the internet access. If the time is set to 5 min, then the internet access will be disabled in 5 min. You will have to manually enable it again for the internet is re-established. The Internet Access Timer was created for a few users who had specific uses. They wanted to have their children use the computer and not go on the internet. Most people do not use the timer, they just hit the button "Stop Internet Access Now" and then hit the button "Hide". The children will not be able to access the timer unless they have the password. After setting the timer, make sure the hide button is pressed to located it in the icon tray and to enable password protection. Click on the icon with the two computers connected with lightning bolt to gain access. You will have to input the password.

